

CMW582M*8192/4096 ETC SLG*ME 5M

3xM12 axial



Stock photo

Order-#: CMW582M-00014
3.11.2021 / 010103020105031158

Advantages

- Easy mounting (slot nuts)
- Guide pulley, mountable
- Heavy-Duty applications
- High measuring accuracy
- High working reliability
- Robust Al-alloy profile body

Technical data for CMW582M-00014

NO.OF STEPS/REV	8.192,000
NO. OF REVOLUTIONS	4.096,000
INTERFACE	ETHERCAT
CODE	PROGRAMABLE
SUPPLY VOLTAGE	10-30V
CONNECTOR TYPE	1X4P.M12-CONNECTOR 2X4P.M12-CONN., D-COD(FEMALE)
CONNECTOR-POSITION	AXIAL
MATING PLUG	NO
SHAFT TYPE	COUPLING
TEMPERATURE RANGE	-20+75°C
PROTECTION Class	IP65
MTTFd [y] (T=45°C, DC=0) >=	100

Subject to change.

CMW582M*8192/4096 ETC SLG*ME 5M

3xM12 axial

Order-#: CMW582M-00014
3.11.2021 / 010103020105031158

Technical data for CMW582M-00014 continuation

OPTIONS ENC	ETC-SV 5.01
	ME-WDS-5000-P115 5,0M
PINOUT NO.	TR-ECE-TI-DGB-0308
SLG-RATIO	315,03...315,43 mm/Umdr.
SLG-LINEARITY	+/-0,02%
SLG-TEMPERATURE RANGE	-20°C...+80°C
SLG-PROTECTION CLASS	IP54 / IP65 BOTTOM OUTLET
SLG-SPRING FORCE	min.4N / max.20N
SLG-B10-Value	1.500.000 bei 250.000 Zyk.p.a.
SLG-ROPE DIAMETER	1,0 mm
SLG-PULLOUT ANGLE	max. +/-3°
SLG-ORDER NO	40730003
DRAWING NO.	04-CMW582M-M0016
DOCUMENTATION NO	DOKUMENTE
B10d	1500000
AL:	N
ECCN:	N
UL-APPROVALS	USA+CANADA

General data for K-WDS-05000-115-1

Order number(s)	40-730-003
Housing design	□ 115 mm
Housing material	Aluminium anodized
Measuring length	5.00 m
Gear ratio	315.23 mm/rev.
	Note: Observe name plate!
Accuracy, gear ratio	± 0.06 %
Diameter, measuring wire	1.00 mm
Material, measuring wire	Stainless steel, PA coated
Wire outlet angle	<= ±3 °
Linearity	± 0.02 %
	related to the measuring range
Adjusting speed	<= 4 m/s
Wire acceleration, typically	49 m/s ²
Spring retraction force	4...16 N

Subject to change.

CMW582M*8192/4096 ETC SLG*ME 5M

3xM12 axial

Order-#: CMW582M-00014
3.11.2021 / 010103020105031158

General data for K-WDS-05000-115-1 continuation

Options	
- Guide pulley	one-way, wire outlet linear
Mass, typically	1.4 kg

Environmental data

Vibration	
- Specific value	$\leq 196 \text{ m/s}^2$
- Sine	20...2000 Hz
Shock	
- Specific value	$\leq 490 \text{ m/s}^2$
- Half sine	10 ms
Working temperature	
- Standard	-20...+80 °C
Storage temperature, dry	-40...+80 °C
Protection class	
- Standard	IP65
- Note	according mounting instruction

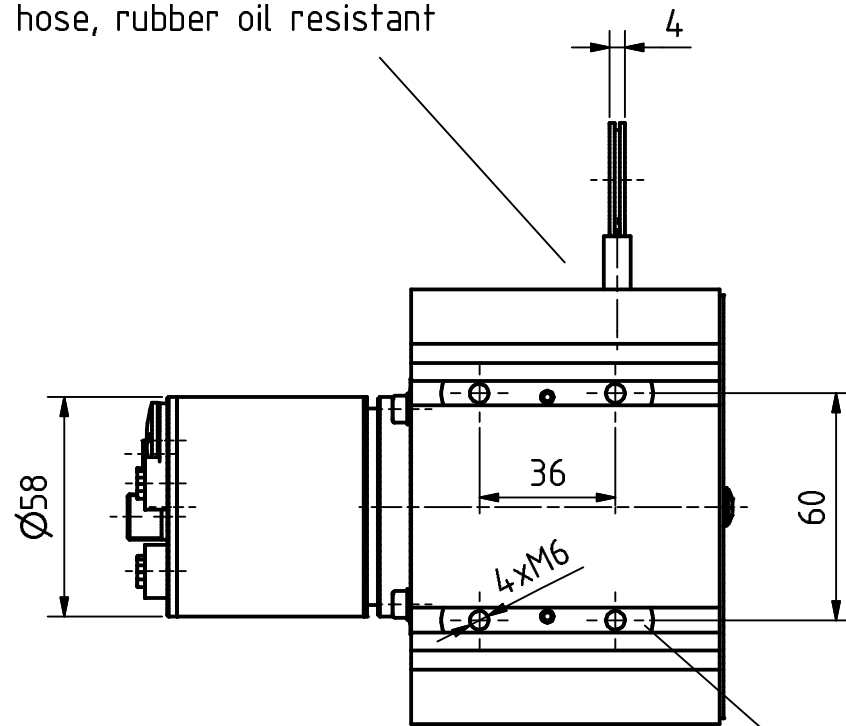
Subject to change.

Schlauch, Kautschuk ölresistent
hose, rubber oil resistant

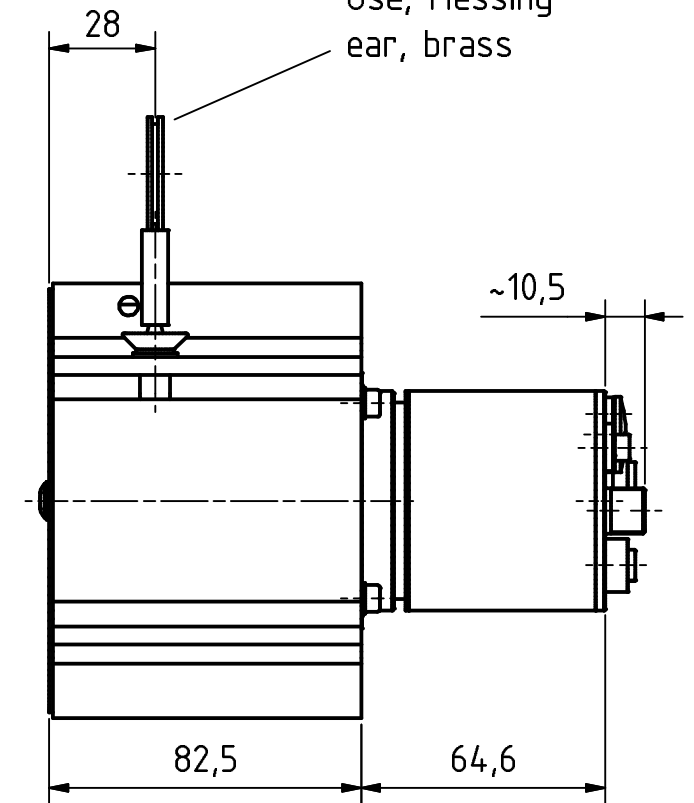
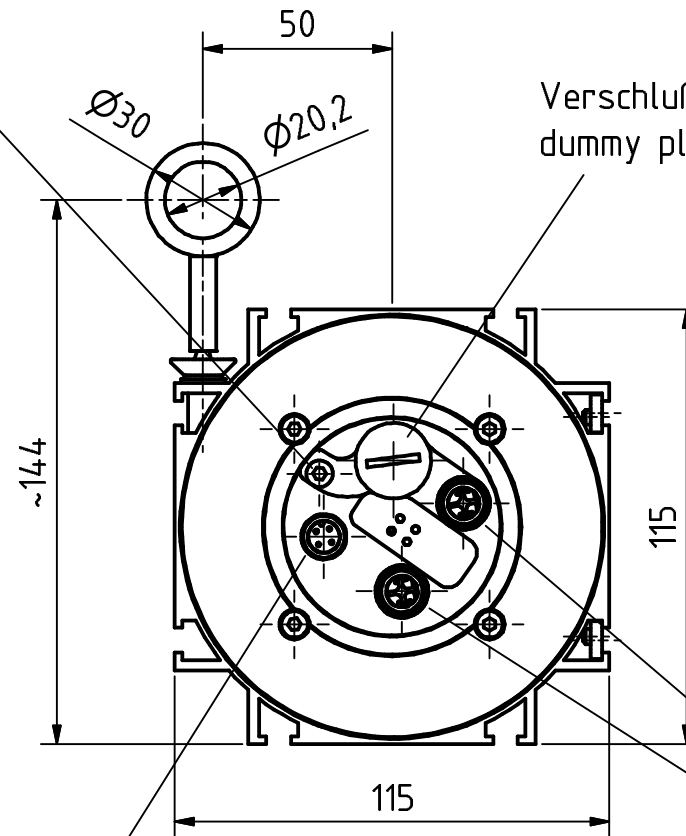
Gewinde M4 für
Potentialausgleich
thread m4 for
potential equalisation

Verschlussstopfen M16x1.5
dummy plug M16x1.5

Öse, Messing
ear, brass

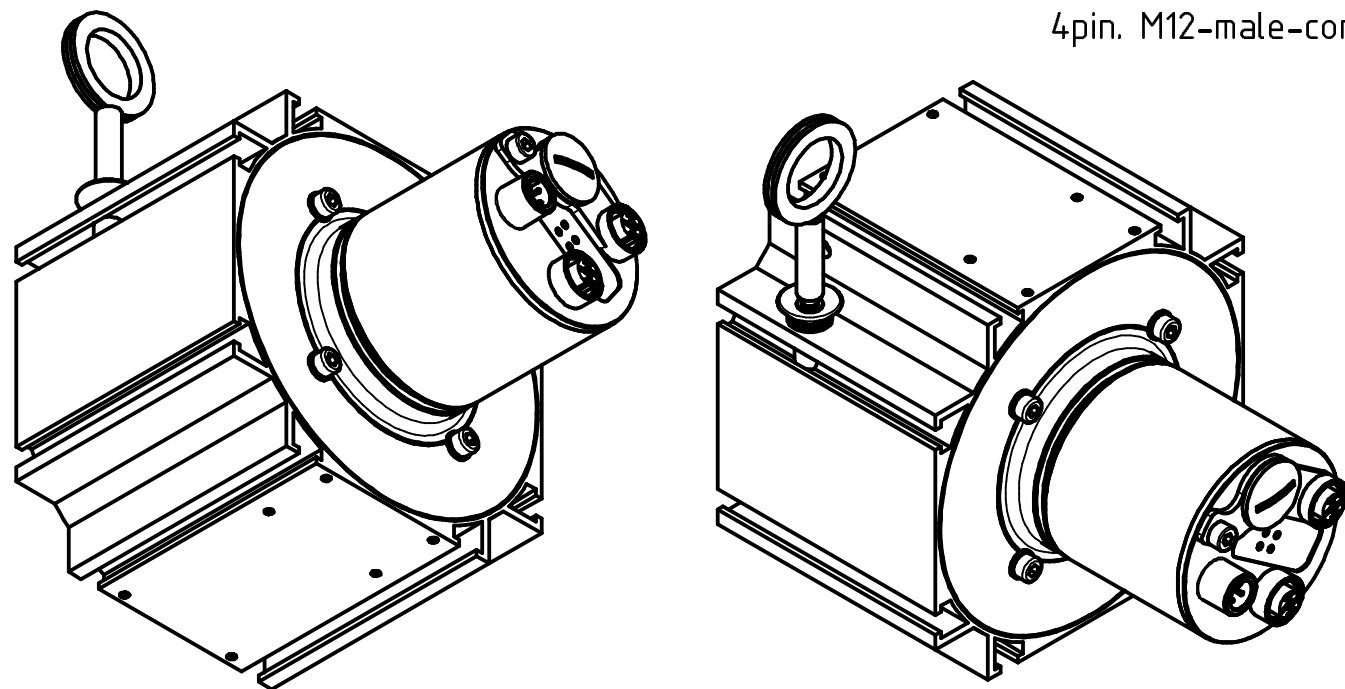


Nutenstein (2x)
slot nut (2x)




4pol. M12-Stecker (Spannungsversorgung)
4pin. M12-male-connector (Supply voltage)

2x4pol. M12-Stecker, d-codiert (Buchse)
2x4pin. M12-connector, d-coded (female)

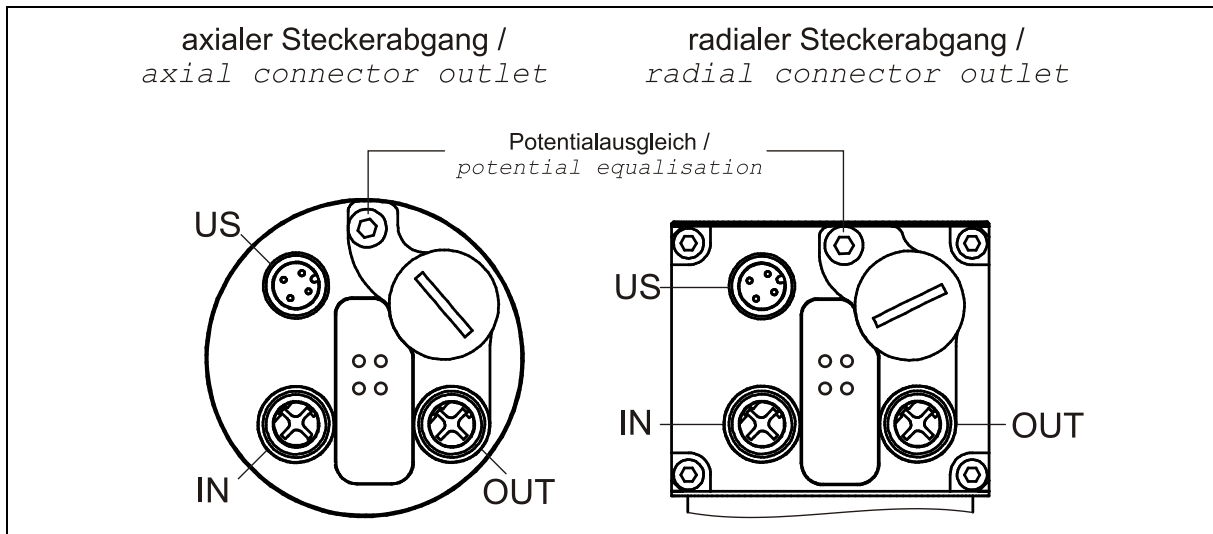


Artikel-Nr. und Steckerbelegung: siehe Datenblatt
Article-No. and pin connections: see data sheet

	TR-Electronic GmbH Eglisshalde 6 D-78647 Trossingen phone +49 7425 228.0 www.tr-electronic.de	Datum Name	Maßstab 1:2	DIN A3	Projekt-Nr.:
			Zeichnungs-Nr. nur für diese Ausführung gültig Drawing-No. only for this type valid		
		Erstellt	14.11.2017	FLAIG	CMW-582-M, pull of rope encoder ME, 5m rope
		Bearb.	14.11.2017	FLAIG	
		Gepr.	15.11.2017	NEMECZ	
		Norm			
		www.tr-electronic.de DXF+Info: info@tr-electronic.de			Zeichnungs-NR./Drawing-No.: 04-CMW582M-M0016
Zustf.	Änderungen	Datum	Name		Blatt 1 1 BU

Steckerbelegung / Pin assignment

Baureihe 582 / 802 / 1102 EtherCAT



Die Schirmung ist großflächig auf das Gegensteckergehäuse aufzulegen! /
 The shielding is to be connected with large surface on the mating connector housing!

US	Flanschstecker / Male socket (M12x1-4 pol. A-coded)			
1	10 – 30 V DC	Encoder-Versorgungsspannung / Encoder-Supply Voltage	Steckseite Mating Face	
2	n.c.	-		
3	0 V	Encoder-Versorgungsspannung / Encoder-Supply Voltage		
4	n.c.	-		

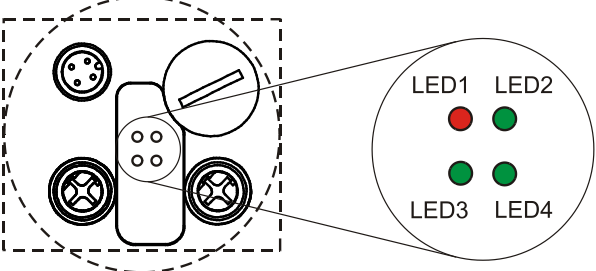
PORT-IN		Flanschdose / Female socket (M12x1-4 pol. D-coded)			
1	TxD+	Sendedaten +	Transmission Data +	Steckseite Mating Face	
2	RxD+	Empfangsdaten +	Receive Data +		
3	TxD-	Sendedaten -	Transmission Data -		
4	RxD-	Empfangsdaten -	Receive Data -		

PORT-OUT		Flanschdose / Female socket (M12x1-4 pol. D-coded)			
1	TxD+	Sendedaten +	Transmission Data +	Steckseite Mating Face	
2	RxD+	Empfangsdaten +	Receive Data +		
3	TxD-	Sendedaten -	Transmission Data -		
4	RxD-	Empfangsdaten -	Receive Data -		

Betriebsanleitung beachten! - Observe User Manual!

Änderungen vorbehalten / Subject to change

Steckerbelegung / Pin assignment

Status-LEDs	
	<p>LED1: NET ERR (rot / red)</p> <p>LED2: NET RUN (grün / green)</p> <p>LED3: LINK/ACTIVITY IN (grün / green)</p> <p>LED4: LINK/ACTIVITY OUT (grün / green)</p>

NET ERR	Mess-System – Fehler / <i>Measuring system error</i>
ON	Kommunikationsfehler oder Applikationsfehler / <i>Communication or application error</i>
Double Flash	Watchdog Timeout / <i>Watchdog Timeout</i>
Single Flash	Lokaler Fehler / <i>Local Error</i>
Blinking	Ungültige Konfiguration / <i>Invalid Configuration</i>
Flickering	Boot-Fehler / <i>Booting Error</i>

NET RUN	EtherCAT Zustandsmaschine / <i>EtherCAT State Machine</i>
OFF	Gerät befindet sich im INIT Zustand / <i>The device is in state INIT</i>
Blinking	Gerät befindet sich im PRE-OPERATIONAL Zustand / <i>The device is in state PRE-OPERATIONAL</i>
Single Flash	Gerät befindet sich im SAFE-OPERATIONAL Zustand / <i>The device is in state SAFE-OPERATIONAL</i>
ON	Gerät befindet sich im OPERATIONAL Zustand / <i>The device is in state OPERATIONAL</i>
Flickering	Gerät befindet sich im Bootvorgang, INIT Zustand noch nicht erreicht / <i>The device is booting and has not yet entered the INIT state</i>

LINK/ACTIVITY IN+OUT	Beschreibung / <i>Description</i>
ON = LINK	Ethernet Verbindung hergestellt / <i>Ethernet connection established</i>
Flickering = ACTIVITY	Datenübertragung RxD/TxD / <i>Data transfer RxD/TxD</i>



Betriebsanleitung beachten! - Observe User Manual!

